

archer²TM

h a z l o c



Work Confidently in Hazardous Locations

From a process of evolution and refinement, the Archer 2™ has emerged faster, smarter, and more intuitive to bring you the ultimate compact rugged handheld. And now you can work in hazardous locations with the utmost confidence with the Class I, Division 2-certified Archer 2, designed to perform safely where explosive gases, liquids, or vapors may be present. So wherever your job takes you, you can trust that the Archer 2 will help you stay safe.

Certification Pending



Archer 2™ Rugged Handheld

Gets the Job Done

The Class I, Division 2-certified Archer 2™ not only provides unwavering safety in potentially-explosive environments, but also makes your job easier by eliminating the obstacles that slow you up. Whether you're headed to a petrochemical plant, gas and oil pipelines, a refinery, or another explosive environment, the Archer 2 will help you get the job done fast, while keeping you and your data safe.

Contact us today to purchase the Archer 2 Standard, Geo, or Geo Cell model in the Class I, Division 2 version for hazardous locations.



ILLUMIVIEW™ HIGH-VISIBILITY DISPLAY

- Extra-large display for easy viewing
- Unparalleled brightness overpowers glaring sunlight
- Extremely scratch-resistant
- Capacitive touchscreen provides sharper image & durability
- Hold-to-zoom™ gives you absolute precision

PERFORMANCE

- Microsoft® Windows Embedded Handheld 6.5.3
- Speedy 1.0 GHz processor
- Loads of memory – 512 MB RAM & 8 GB flash storage



OVERTIME TECHNOLOGY™ BATTERY

- Intelligent Li-Ion battery – 10600 mAh 3.7 V
- Outstanding battery life runs long into overtime
- Operates in extreme temperatures from -22 F to 140 F (-30 C to 60 C)

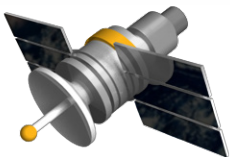
JUNIPER RUGGED™

- Your data has never been so well-protected
- Dustproof & waterproof (IP68 rating)
- Designed to MIL-STD-810G
- 2-year warranty



IT'S GOT IT ALL

- 1D/2D barcode imager
- Long-range Bluetooth® field tested to 1000 feet (300 m) with Topcon OS Series Total Station
- Simultaneous GPS and GLONASS capabilities
- 5 MP camera + video capture
- Wi-Fi®, cell modem, serial, & USB connectivity



Applications

- LDAR
- AM/FM
- Preventative Maintenance
- Waste & Materials Management
- Refueling
- Industrial Equipment Maintenance
- Petroleum & Petrochemical Rounds
- Rig Floor Operations
- Well & Mud Logging
- Safety Inspections
- Compliance Tracking
- Spill & Incident Reports
- Fugitive Emissions Monitoring
- Fuel Distribution & Delivery

For partnership inquiries, please contact Juniper Systems at sales@junipersys.com